



ARIZONA
PICKLEBALL PLAYERS LEAGUE

APPL CAPTAIN TRAINING

November 2022

Agenda

- Welcome Captains & Co-Captains*
- Hosts: Alexa Erjavic & Greg Mather
- Agenda:
 - Your APPL Team
 - Key Information
 - Your Responsibilities
 - Website Tutorial
 - Rescheduling
 - State Championships



* This meeting is being recorded

APPL Org Chart

Greg Mather
President

Brian Shipman
Vice President & Treasurer

Bob Ham
Vice President & PSAT



Priscilla Scott
Southern Regional
Director

Carol Barron
West Valley
Regional Director

Missy Myers
East Valley
Regional Director

Brian Shipman
Casa Grande
Regional Director



Scot Ritchie
Men's LC



Elise Souter
Women's LC



Pam McCallum
Mixed LC



Charles Davic
Men's 65+ Pilot

APPL Org Chart

Greg Mather
President

Brian
Vice President

Bob Ham
Vice President & PSAT



Priscilla Scott
Southern Regional
Director

Carol Barron
West Valley
Regional Director

Missy Myers
East Valley
Regional Director

Brian Shipman
Casa Grande
Regional Director



Tom Bottorf
Men's LC



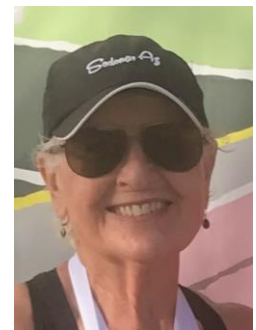
Sandy Schaefer
2.5, 3.0, 3.5
Women's LC



Carol Acker
4.0, 4.5/5.0
Women's LC



Denise Lopez
Mixed LC



Sandy Scanlan
65+ Women's
and Mixed LC

APPL Org Chart

Greg Mather
President

Brian Shipman
Vice President & Treasurer

Vice President & Treasurer



Priscilla Scott
Southern Regional
Director

Carol Barron
West Valley
Regional Director

Missy Myers
East Valley
Regional Director

Brian Shipman
Casa Grande
Regional Director



Gregg Garthright
Men's LC



Deb Albert
Women's LC

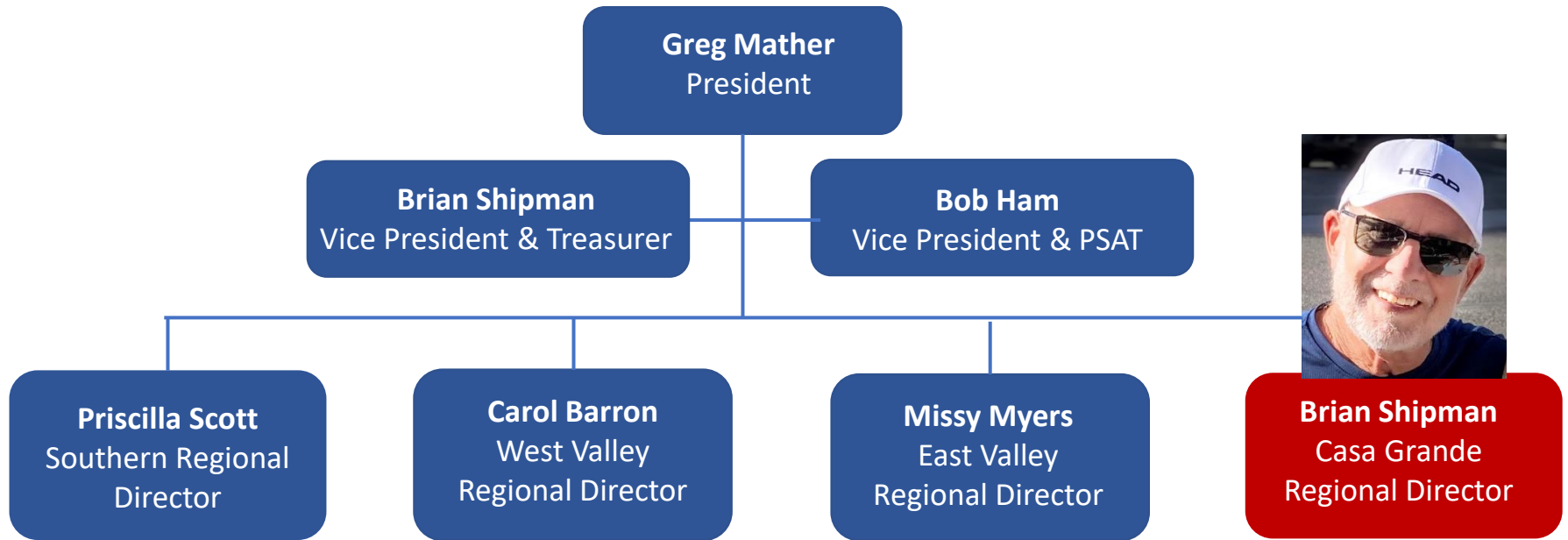


Andy Stowe
Mixed LC



Ruth Elliott
4.5/5.0 Women's
Flight Coordinator

APPL Org Chart



Jim Reynolds
Robson Community Admin

Elaine Gonzales
Encanterra Community Admin

Debbie John
Mission Royale Community Admin
(Women)

Kurt Bauer
Dave White Community Admin

Jay Schwartz
Sun City Anthem/Merrill Ranch
Community Admin

Gerry Bertrand
Mission Royale Community Admin
(Men, Mixed)

Communicating with APPL & Your LC

- Check Rules, Captain Guide and Videos prior to an email inquiry
- Info to put in every email
 - League
 - Flight
 - Team Name+
- Example: I'm Alexa Erjavic on Women's 55+, 3.5, Prickly Pears.

Important Dates & Things to Know

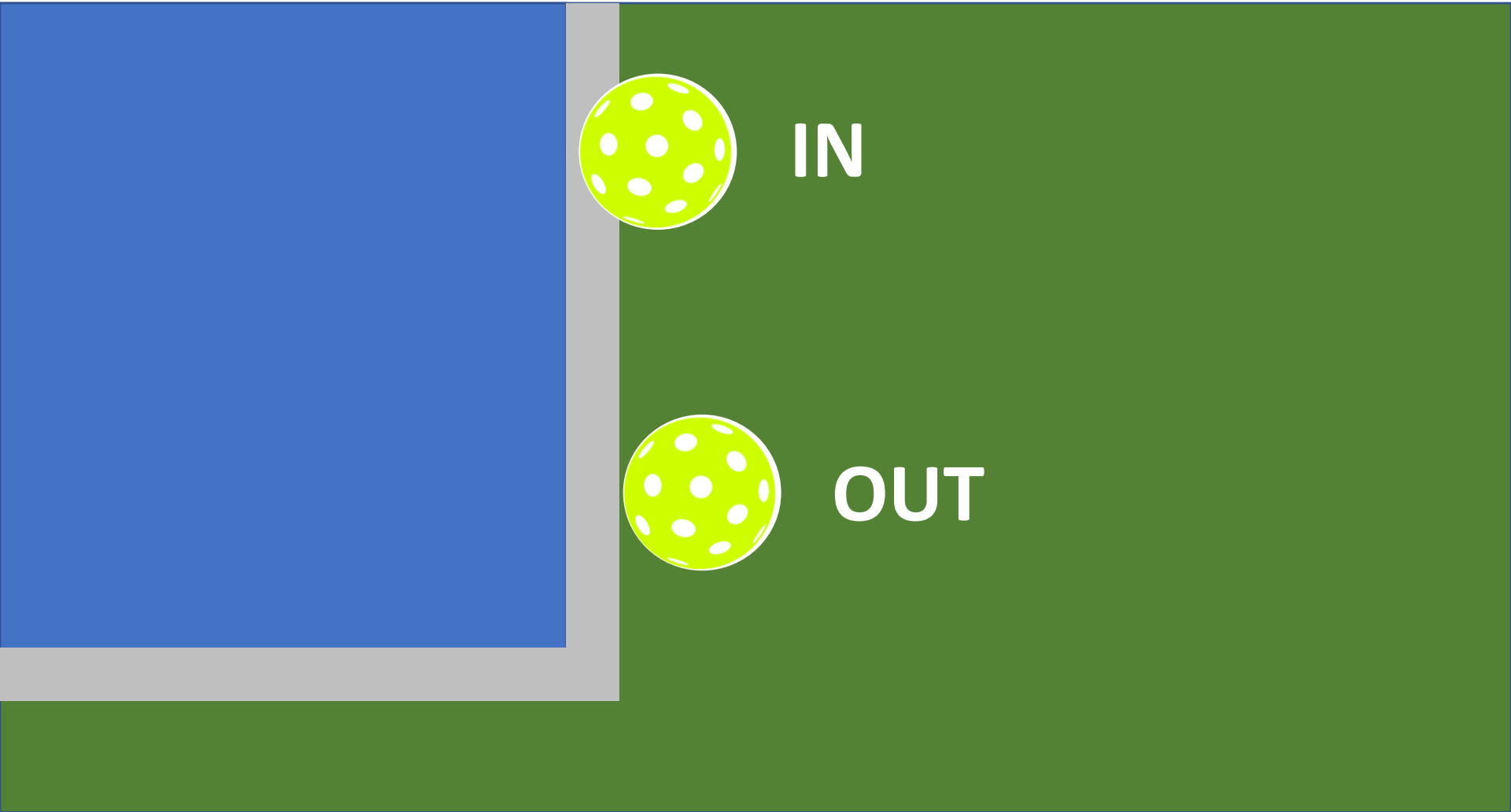
Dates

- 1st week of Dec: Schedules published
- Dec 24: Initial Rescheduling Ends
- Dec 24: Court Fees Due
- Jan 2: Matches Start
- Feb 15: Player Registration Ends
- March 31 – April 4th: State Championships

Things to Know

- No substitutes other than injury or physical illness
- Add players to your team if needed
- Captains can say “no” to rescheduling requests after Dec 24th
- Balls to use: neon Dura 40 or optic yellow Franklin X
- Out ball rules

Out Ball Rules – in non-refereed matches



Your Responsibilities



- **Skills** rating accuracy – rating appeals process
- **Age** requirements and validation
- **Polling** your team for availability **EARLY**
- Following the **rescheduling** process
- Code of **conduct**
- **Pre-match** best practices (reach out to other captain 2 days prior)
- Encourage your players to create a **Login** on the regional website

Team Roster Skill Requirements (III.D.)

Single Skill Level Flights: Teams in single skill level flights (ex. 2.5, 3.0, 3.5, 4.0) must contain at least 50% of players with the same rating as the flight. Teams may contain up to 50% of players rated one half of a rating point below the flight skill level.

Combined Skill Level Flights: Teams in combined skill level flights (ex. 4.5/5.0+) may contain up to 25% of players rated one half of a rating point below the lower of the combined skill levels. In addition, teams in the 4.5/5.0 combined skill level flight may not contain more than 50% players rated 5.0 or above.

- To determine how many players of a lower skill level you can have on your team, multiply the total number of players on your team (player count) by the appropriate number (50%=0.5 or 25%=0.25). If the number has a decimal of 0.5 or greater, round up to a whole number. If the decimal is less than 0.5 round down.
- **Example 1:** For a 4.0 team that has 13 total team members, $13 \times 0.5 = 6.5$ which rounds up to 7 players allowed with a 3.5 rating
- **Example 2:** For a 4.5/5.0 combined team that has 13 total team members, $13 \times 0.25 = 3.25$ which rounds down to 3 players allowed with a 4.0 rating

APPL and Regional Website Tutorial

Player Resources Page



- Rules
- Policy
- Scoresheet



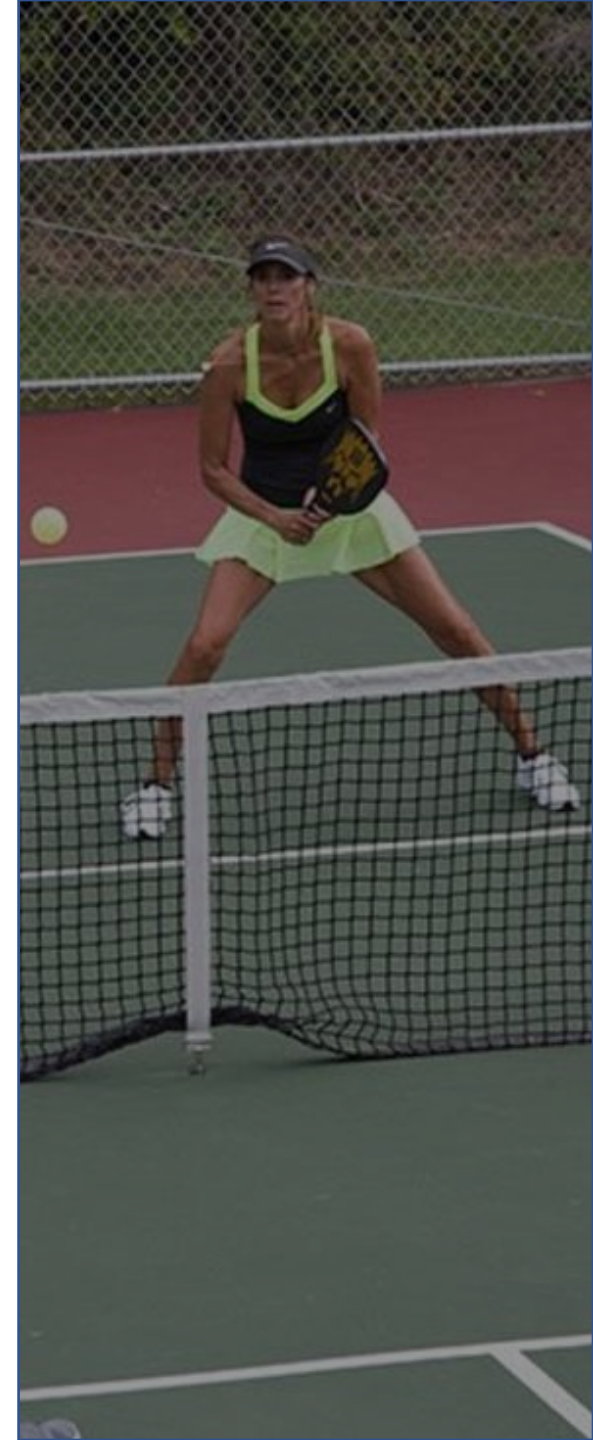
- Training videos
- Venue schedules

Regional Website

- Captain contacts
- Emailing your team
- Polling for availability
- Line up tools
- Score Entry

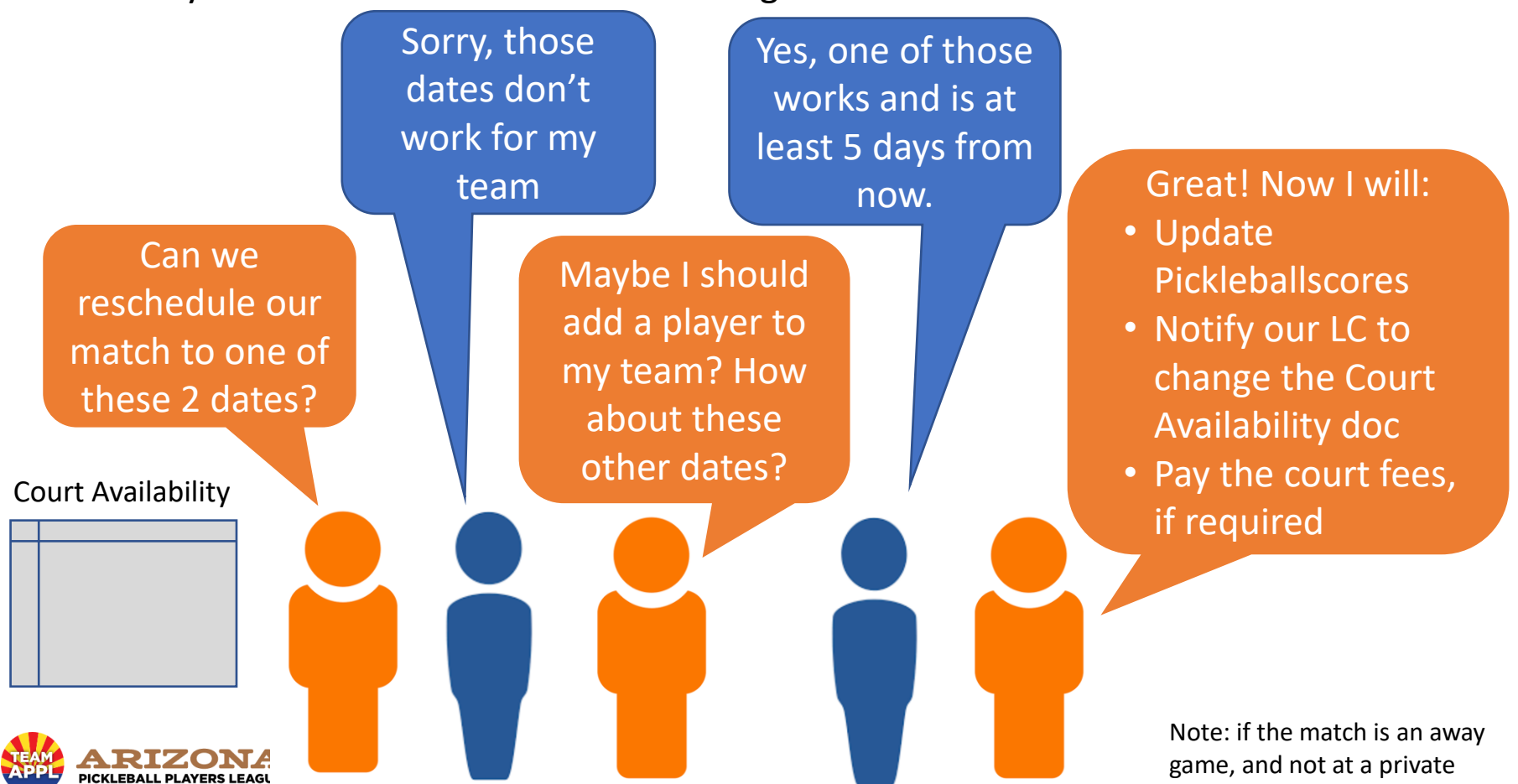


- Captain Guide



Rescheduling Policy and Process

- After Dec 24th schedules are presumed to be final except for inclement weather (20 mph winds or rain)
- Both Captains need to agree on re-schedule date
- 5 days advance notice of schedule changes to LC



Note: if the match is an away game, and not at a private venue, you need to do the work

State Championships

- End of March: Sub-flight playoffs if needed
- March 31 - April 4: State Championships
- Dave White regional park in Casa Grande
- Participants are Open Age and 55+ regional winners



Questions

